



Phoenix Road, SE20 | £975,000

02087029777

sydenham@pedderproperty.com

pedder
We live local



In General

- Beautiful Victorian home
- Overlooks the historic Alms houses
- Through reception
- Kitchen / dining room
- Four double bedrooms
- Bathroom and shower room
- South facing garden
- Excellent transport links
- Very close to Crystal Palace park

In Detail

This characterful four bedroom, two bathroom Victorian home features a sun-drenched, south-facing garden, set against the picturesque backdrop of the historic alms-houses, and is located close to excellent transport links, green open spaces and a range of coffee houses, restaurants and shops.

The home has been sensitively modernised and the integrity maintained, showcasing the period detailing throughout.

The through reception feels like a naturally inviting space to relax, beautifully lit during the day by the generous bay window, and decorated in powdery hues, calming the space. As the evening closes in there is a wood burner in the front reception which makes for a cosy lounge area.

The kitchen / dining room is charming comprising a range of cabinetry providing plenty of storage, wood block work surfaces, Butlers sink and high quality fitted appliances including a double oven, dishwasher and gas hob. There is good dining space for families to gather for meals and French doors frame a lovely view of the rear garden.

Upstairs is equally impressive, with four double bedrooms arranged over two levels, a bathroom with a deep bath tub and a shower room, both finished in neutral tiling. The bedroom on the upper floor enjoys leafy open views that stretch across tree tops and Waterman's Square, creating the feeling of a countryside retreat, a rarity for a London home.

To the rear the garden is a hidden oasis, tucked away from the world, offering a sense of tranquillity. Enclosed by lush greenery, it features a screen of sweet scented Jasmin, two mature magnolia trees which produce stunning springtime blooms, raised established beds, a large patio and a lush lawn, the space feels like a private retreat, sheltered from view and brimming with nature's beauty.

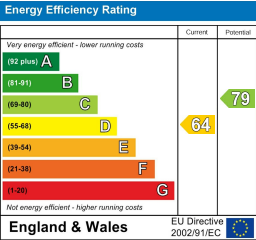
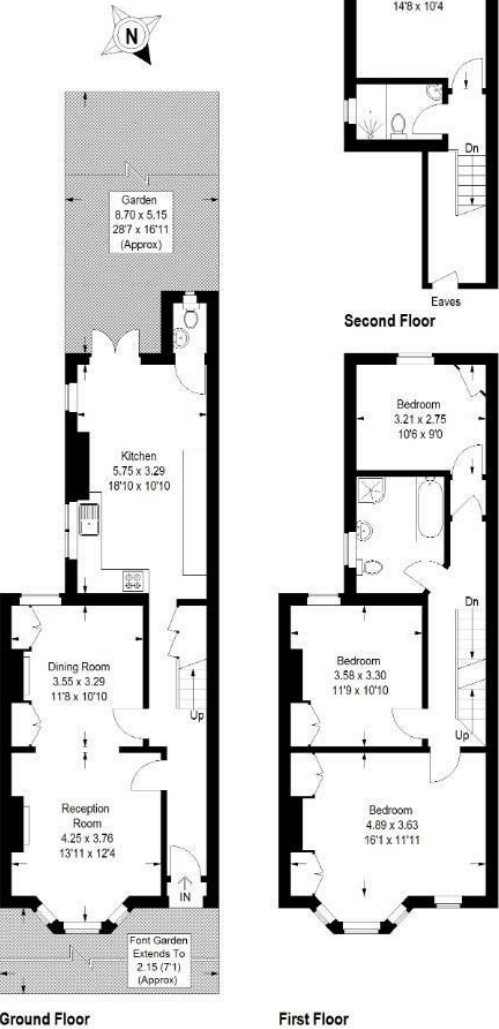
A very special house, in a gorgeous location. This property should be viewed, to be fully appreciated.

EPC: D | Council Tax Band: D



Floorplan

Phoenix Road, SE20
Approximate Gross Internal Area
(Excluding Eaves)
138.1 sq m / 1486 sq ft



Copyright www.pedderproperty.com © 2025
These plans are for representation purposes only as defined by RICS - Code of Measuring Practice.
Not drawn to Scale. Windows and door openings are approximate. Please check all dimensions, shapes and compass bearings before making any decisions reliant upon them.

Pedder Property Ltd trading as Pedder for themselves and for the vendor/landlord of this property whose agents they are, give notice that (1) these particulars do not constitute any part of an offer or contract, (2) all statements contained within these particulars are made without responsibility on the part of Pedder or the vendor/landlord, (3) whilst made in good faith, none of the statements contained within these particulars are to be relied upon as a statement of representation or fact, (4) any intending purchaser/tenant must satisfy him/herself by inspection or otherwise as to the correctness of each of the statements contained within these particulars, (5) the vendor/landlord does not make or give either Pedder or any person in their employment any authority to make or give representation or warranty whatsoever in relation to this property.